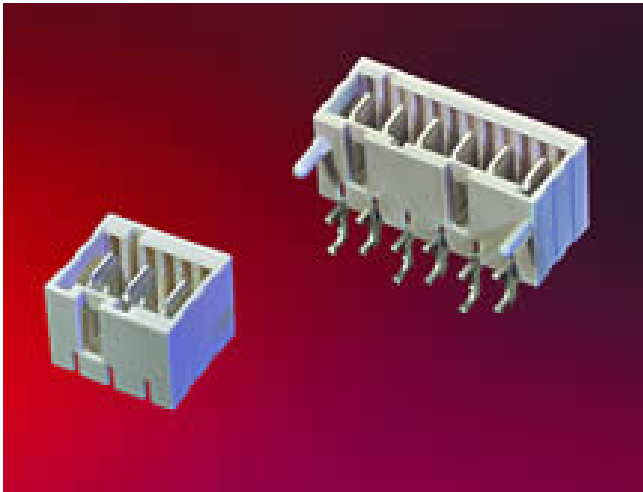


ECO-FLEX M



**DESCRIPTION OF SYSTEM**

- Tab connector for THT
- SMT version for vertical PC board assembly
- Versions for vertical or horizontal PC board assembly
- Higher horizontal version also suitable for connectors with locking feature outside
- For in-line or dual-line hole patterns
- Individual polarizing and positioning possible
- Pegs optional

**TECHNICAL DATA**

**Mechanical**

Pitch	5 mm
Positions	
- ECO-FLEX M	2 - 12
- ECO-FLEX SMT	2 - 6
Termination	Soldering
Temperature range	-40 °C ... +120 °C

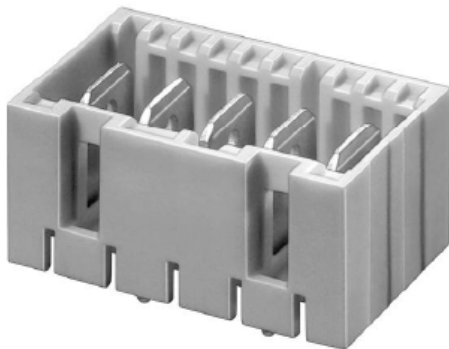
**Electrical**

Rated current <sup>2</sup>	16 A
Rated voltage <sup>2</sup>	250 V
Dielectric strength <sup>3</sup>	2.5 kV
Tracking resistance <sup>1</sup>	CTI ≥ 400
Air gap and creeping distance	≥ 4 mm
Insulation resistance	> 10 <sup>9</sup> Ω
Contact resistance	< 10 mΩ
Approved by	DIN EN 61984 (IEC 61984) UL / ULC E96569

**Materials**

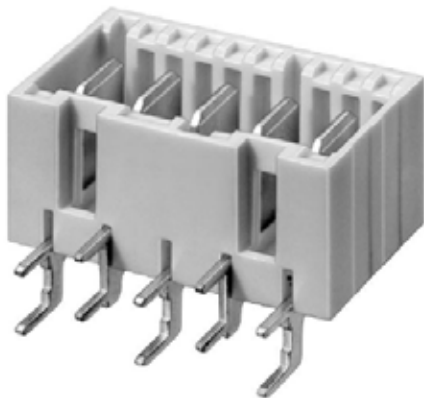
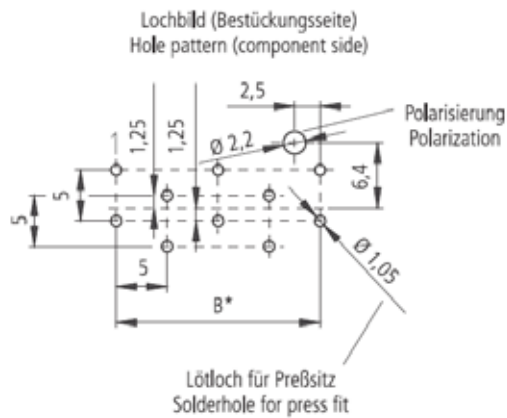
Contacts	Tab 6.3 x 0.8 mm
Housings	PA, glow wire resistant, GWT750°C acc.to IEC 60335-1
SMT- tab connector	PA, glow wire resistant, GWT 750°C acc. to IEC 60335-1
Color of housing	natural
Contact material	CuZn
Contact finishing	NiSn

<sup>1)</sup> nach IEC 60664  
<sup>2)</sup> abhängig vom eingesetzten Gegenstecker und von der Platine  
<sup>3)</sup> Materialabhängig



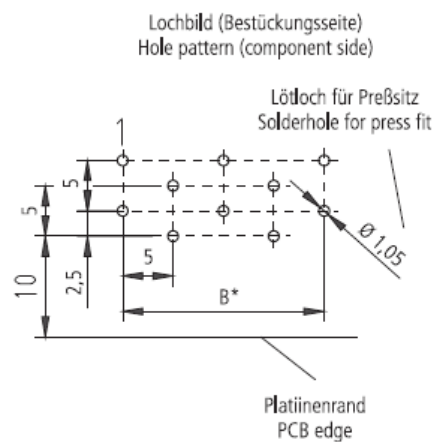
**Serie MS 9401**

**Tab connectors for vertical connections, dual-line**

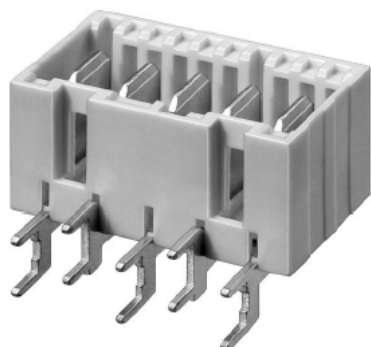


**Serie MS 9402**

**Tab connectors for horizontal connections, locking feature at bottom**

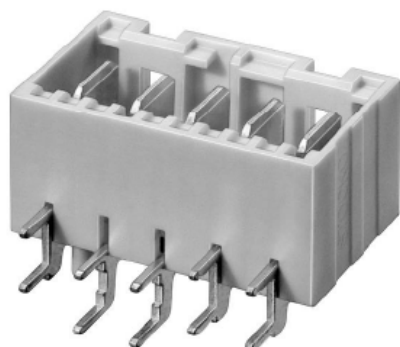
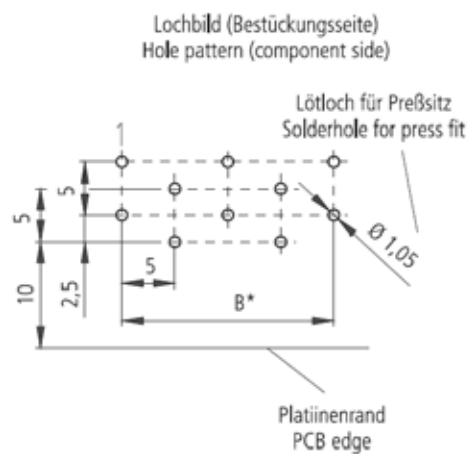


ECO-FLEX M



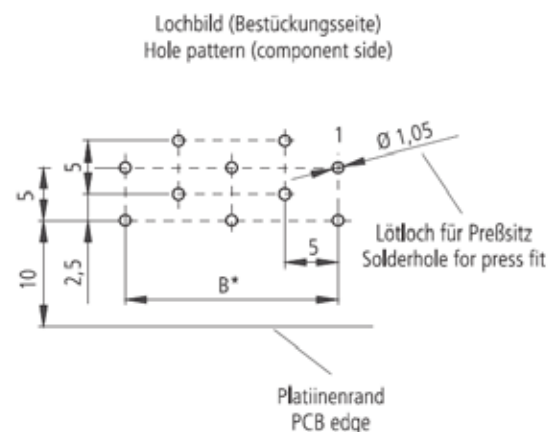
Serie MS 9403

Tab connectors for horizontal connections, raised version, for locking feature outside at bottom

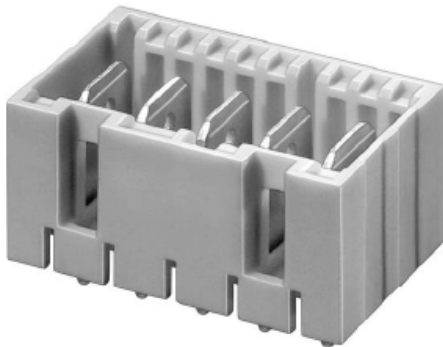


Serie MS 9404

Tab connectors for horizontal connections, locking feature on top

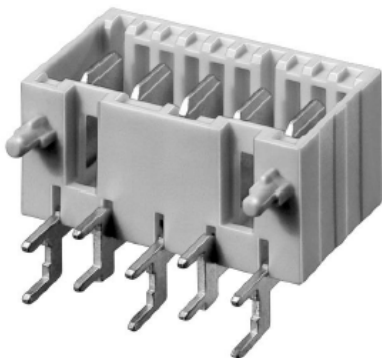
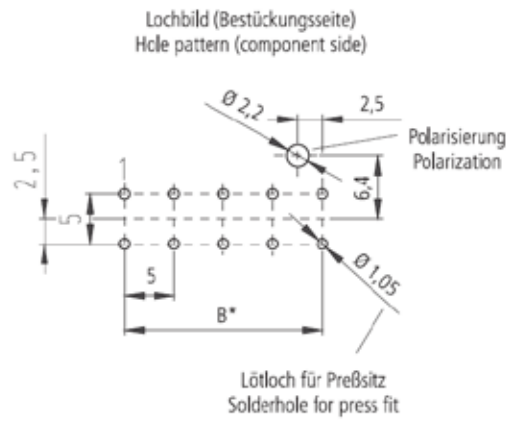


ECO-FLEX M



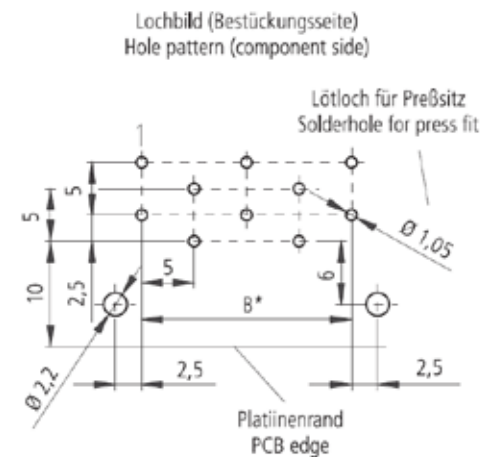
**Serie MS 9405**

**Tab connectors for vertical connections, in-line**



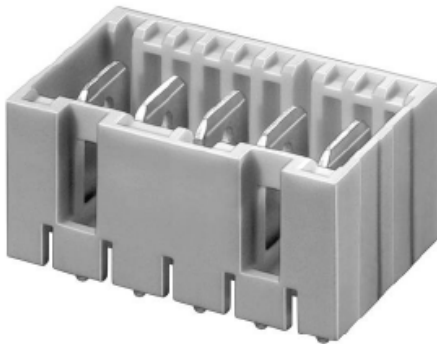
**Serie MS 9406**

**Tab connectors for horizontal connections, raised version, for locking feature outside at bottom**

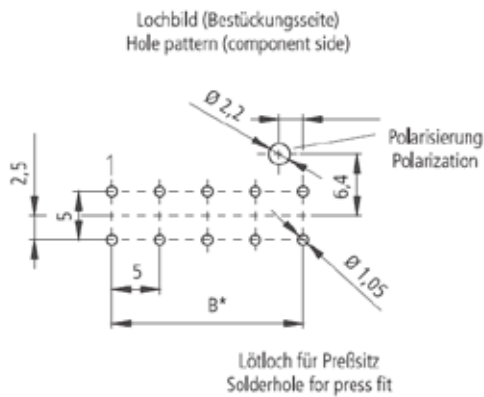


ECO-FLEX M

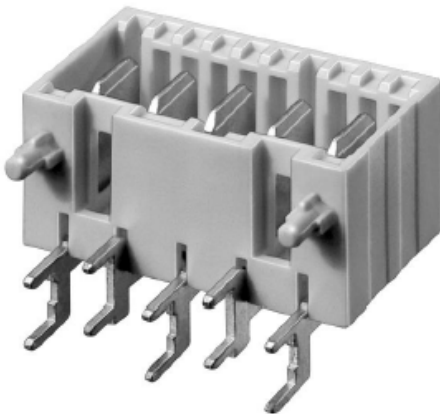
**Serie MS 9407**



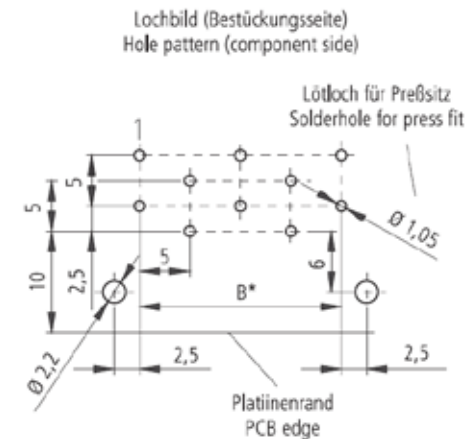
**Tab connectors for vertical connections, with moved locking feature at contact for series EH 688**



**Serie MS 9408**



**Tab connectors for horizontal connections, raised version, for locking feature outside at bottom, with pegs, with moved locking feature at contact for EH 688**

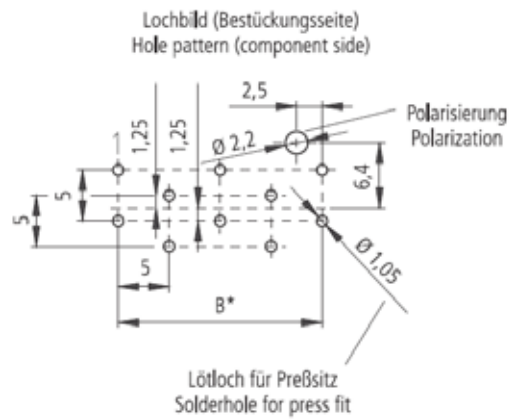






**Serie MS 9452**

**Tab connector for inside- and outside locking, vertical connections, dual-line, pottable version**





## STOCKO CONTACT

GmbH & Co. KG

Simonshöfchen 31  
D-42327 Wuppertal

Phone +49 202 9733 - 0  
Fax +49 202 9733 - 411

E- Mail [info@stocko-contact.com](mailto:info@stocko-contact.com)  
Internet [www.stocko-contact.com](http://www.stocko-contact.com)

Ein Unternehmen der Wieland Gruppe  
A Member of the Wieland Group



**Wuppertal**  
Deutschland/Germany



**Hellenthal**  
Deutschland/Germany



**Andlau**  
Frankreich/ France