

XP 0.64 Series

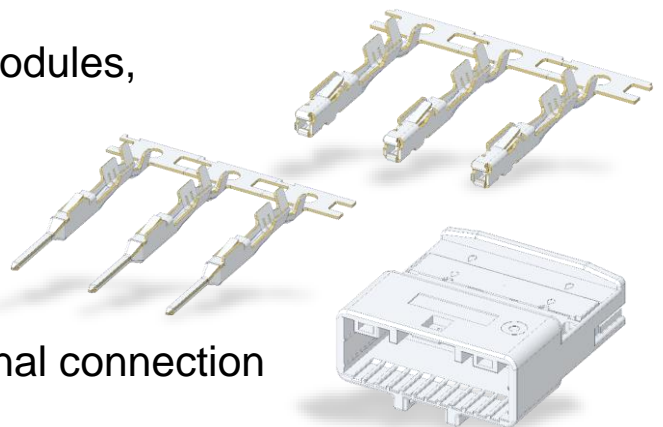
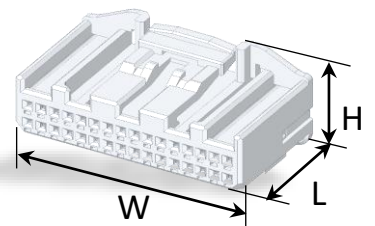
XP 0.64 Series Characters

- With electrical density on vehicles increasing, more electrical connections are required in a smaller space
- With autonomous system coming, there are more and more signal connection circuits
- Smaller pitch size can support customers with more compact design and save more PCB area
- 0.64 terminal can realize more lightweight design and contribute more for energy saving (increase mileage)
- 0.64 terminal can accept a smaller crimping wire diameter range, which can reduce the weight of the harness

XP 0.64 Applications

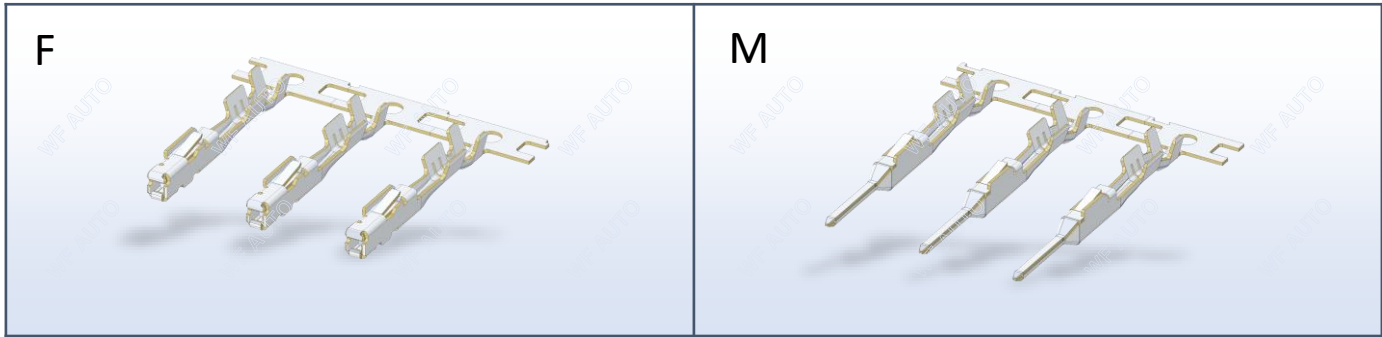
Reference Dimension: mm

- Wire to wire, wire to board end electrical connection
- Various sensors of automobile
- BCM signal connection
- Various instrument display modules, multimedia center
- Seat control module
- Central control key module
- Airbag electronic module signal connection
- Gateway module



XP 0.64 Series Terminal Features

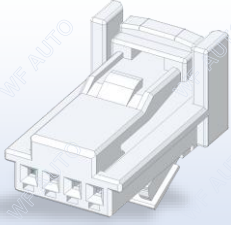
- Terminal Interface: 0.635 X 0.635
- Current Capacity: 5A
- Wire Size: 0.22~0.5 mm²
- Plating: Sn
- Material: Copper Alloy
- Temperature: -40°C~105°C



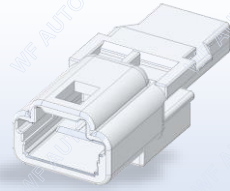
PN	Plating	Wire mm ²	L*W*H mm	PN	Plating	Wire mm ²	L*W*H mm
XP202501FK2	Sn	0.22~0.5	19*1.5*2.45	XP202501MK2	Sn	0.22~0.5	25*1.5*2.45

XP 0.64 Series

4F



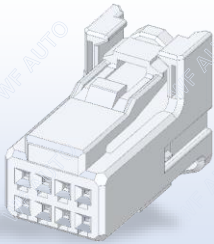
4M



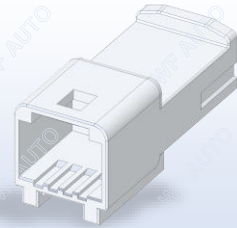
PN	Color	Coding	L*W*H mm
XP2060400FW	Natural	/	19*12*10

PN	Color	Coding	L*W*H mm
XP0000901	Natural	/	34*14*12

8F



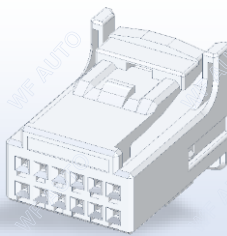
8M



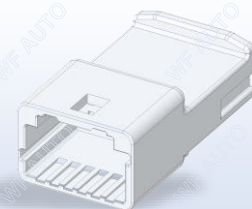
PN	Color	Coding	L*W*H mm
XP2060804FW	Natural	/	21*11*16
XP2060805FB	Black	/	21*11*16

PN	Color	Coding	L*W*H mm
XP0000902	Natural	/	34*14*15

12F



12M

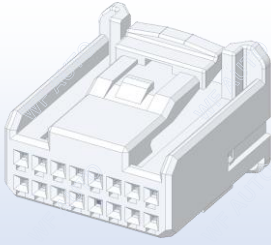


PN	Color	Coding	L*W*H mm
XP2061206FW	Natural	/	21*15*16
XP2061208FB	Black	/	21*15*16

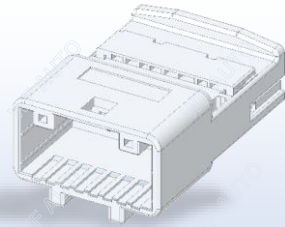
PN	Color	Coding	L*W*H mm
XP0000903	Natural	/	19*34*15

XP 0.64 Series

16F



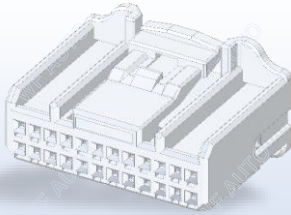
16M



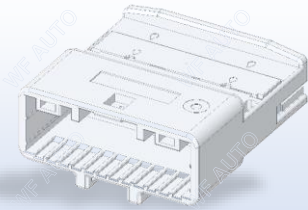
PN	Color	Coding	L*W*H mm
XP2061601FW	Natural	/	21*20*16

PN	Color	Coding	L*W*H mm
XP2061601MW	Natural	/	34*23*15

24F



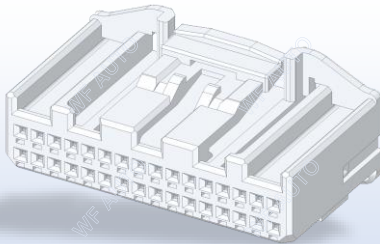
24M



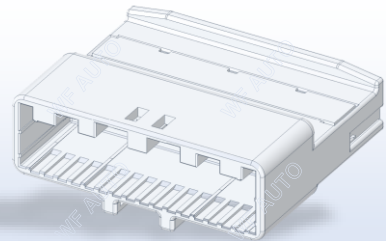
PN	Color	Coding	L*W*H mm
XP2062406FW	Natural	/	21*29*16
XP2062407FB	Black	/	21*29*16

PN	Color	Coding	L*W*H mm
XP0000224	Natural	/	34*32*15

32F



32M

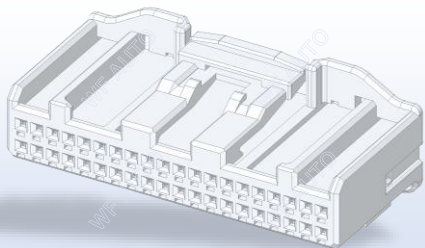


PN	Color	Coding	L*W*H mm
XP0000214	Natural	/	21*37*16
XP0000293	Black	/	21*37*16

PN	Color	Coding	L*W*H mm
XP0000904	Natural	/	34*40*15

XP 0.64 Series

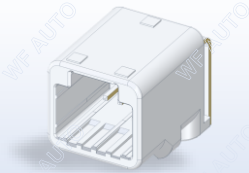
40F



PN	Color	Coding	L*W*H mm	PN	Color	Coding	L*W*H mm
XP0000216	Natural	/	21*46*16				
XP0000296	Black	/	21*46*16				

XP 0.64 Series

8M

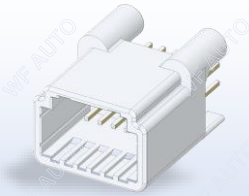


12M

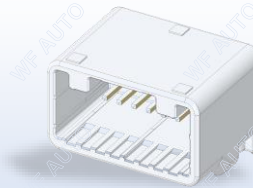


PN	Color	L*W*H mm	Mating	PN	Color	L*W*H mm	Mating
XP0000906	Natural	24.5*14.2*15.5	XP2060804FW	XP0000907	Natural	24.5*18.6*15.5	XP2061206FW

12M

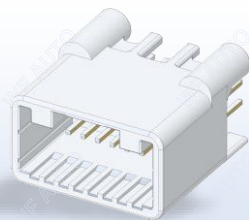


16M

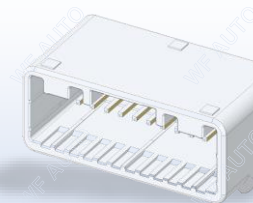


PN	Color	L*W*H mm	Mating	PN	Color	L*W*H mm	Mating
XP0000912	Natural	23.4*18.6*13.4	XP2061206FW	XP0000908	Natural	24.5*23*15.5	XP2061601FW

16M



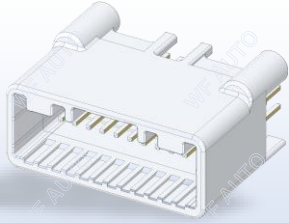
24M



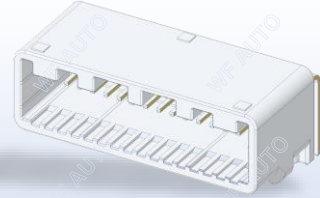
PN	Color	L*W*H mm	Mating	PN	Color	L*W*H mm	Mating
XP0000913	Natural	23.4*23*13.4	XP2061601FW	XP0000909	Natural	24.5*31.8*15.5	XP2062406FW

XP 0.64 Series

24M



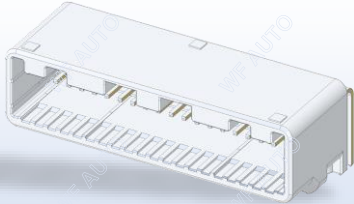
32M



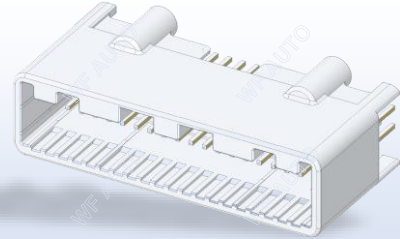
PN	Color	L*W*H mm	Mating
XP0000914	Natural	23.4*31.8*13.4	XP2062406FW

PN	Color	L*W*H mm	Mating
XP0000910	Natural	24.5*40.6*15.5	XP0000214

40M



40M



PN	Color	L*W*H mm	Mating
XP0000911	Natural	24.5*49.4*15.5	XP0000216

PN	Color	L*W*H mm	Mating
XP0000916	Natural	23.4*49.4*13.4	XP0000216